

Wide-slot/web design for a wide range of wiring bundle sizes

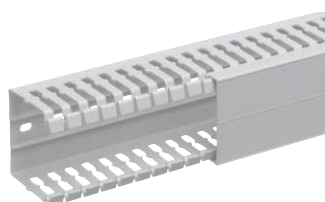
Highly recommended for use in panels subject to high internal or external temperatures. The stability of the material ensures full cover security, protecting the wiring within the temperature ranges shown.

- Temperature range from -25 °C to +90 °C
- Flame-retardant according to UL94-V0, UL-recognized and CSA-certified
- EN50085-2-3-approved, VDE and CE marking
- EN45545-2 for railway applications
- slot 6 mm, web 6.5 mm

**Colours:**  
light grey: RAL 7035

**Material:**  
PC-ABS halogen-free

**Wiring duct length:**  
2 meters



HA760040

Depth (mm)	Width (mm)	Area (mm <sup>2</sup> )	1 mm <sup>2</sup> H05V- U/K 6.157 mm <sup>2</sup>	1.5 mm <sup>2</sup> H07V- U/R 8.553 mm <sup>2</sup>	2.5 mm <sup>2</sup> H07V- U/R 11.946 mm <sup>2</sup>	2.1 mm <sup>2</sup> No 14 AWG 11 mm <sup>2</sup>	3.3 mm <sup>2</sup> No 12 AWG 14 mm <sup>2</sup>	Pack Qty	Cat. ref.
------------	------------	-------------------------	--	--	---	---	---	----------	-----------

### Base and cover HA7

25 x 25	220	14	10	7	8	6	50	<b>HA725025</b>
25 x 40	375	24	18	13	14	11	48	<b>HA725040</b>
25 x 80	642	42	30	21	23	18	24	<b>HA725080</b>
40 x 25	462	30	22	15	17	13	48	<b>HA740025</b>
40 x 30	535	35	25	18	19	15	40	<b>HA740030</b>
40 x 40	749	49	35	25	27	21	50	<b>HA740040</b>
40 x 60	1,155	75	54	39	42	33	40	<b>HA740060</b>
40 x 80	1,557	101	73	52	57	44	30	<b>HA740080</b>
40 x 100	1,956	127	91	65	71	56	20	<b>HA740100</b>
60 x 25	836	54	39	28	30	24	60	<b>HA760025</b>
60 x 30	1,060	69	50	35	39	30	48	<b>HA760030</b>
60 x 40	1,404	91	66	47	51	40	40	<b>HA760040</b>
60 x 60	2,184	142	102	73	79	62	24	<b>HA760060</b>
60 x 80	2,970	193	139	99	108	85	20	<b>HA760080</b>
60 x 100	3,746	243	175	125	136	107	16	<b>HA760100</b>
60 x 120	4,519	294	211	151	164	129	12	<b>HA760120</b>
80 x 25	1,202	78	56	40	44	34	20	<b>HA780025</b>
80 x 30	1,533	100	72	51	56	44	24	<b>HA780030</b>
80 x 40	2,071	135	97	69	75	59	20	<b>HA780040</b>
80 x 60	3,243	211	152	109	118	93	20	<b>HA780060</b>
80 x 80	4,412	287	206	148	160	126	12	<b>HA780080</b>
80 x 100	5,577	362	261	187	203	159	12	<b>HA780100</b>
80 x 120	6,737	438	315	226	245	192	16	<b>HA780120</b>
100 x 30	1,875	122	88	63	68	54	48	<b>HA7100030</b>
100 x 40	2,663	173	125	89	97	76	40	<b>HA7100040</b>
100 x 60	4,239	275	198	142	154	121	16	<b>HA7100060</b>
100 x 80	5,815	378	272	195	211	166	16	<b>HA7100080</b>
100 x 100	7,391	480	346	247	269	211	12	<b>HA7100100</b>



HA70402

<i>Width (mm)</i>	<i>Pack Qty</i>	<i>Cat. ref.</i>
<b>Cover HA7 for duct</b>		
25 x 25	28	HA70252K
25 x 40	28	HA70402K
25 x 80	20	HA70802K
40 x 25	28	HA70252
40 x 30	40	HA70302
40 x 40	28	HA70402
40 x 60	20	HA70602
40 x 80	20	HA70802
40 x 100	12	HA71002
60 x 25	28	HA70252
60 x 30	40	HA70302
60 x 40	28	HA70402
60 x 60	20	HA70602
60 x 80	20	HA70802
60 x 100	12	HA71002
60 x 120	12	HA71202
80 x 25	28	HA70252
80 x 30	40	HA70302
80 x 40	28	HA70402
80 x 60	20	HA70602
80 x 80	20	HA70802
80 x 100	12	HA71002
80 x 120	12	HA71202
100 x 30	40	HA70302
100 x 40	28	HA70402
100 x 60	20	HA70602
100 x 80	20	HA70802
100 x 100	12	HA71002

Wide-slot/web design for a wide range of wiring bundle sizes

Highly recommended for use in panels subject to high internal or external temperatures. The stability of the material ensures full cover security, protecting the wiring within the temperature ranges shown.

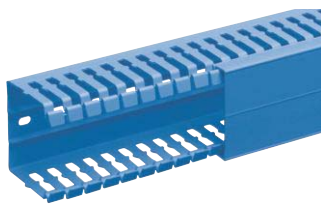
- Temperature range from -25 °C to +90 °C
- Flame-retardant according to UL94-V0, UL-recognized and CSA-certified
- EN50085-2-3-approved, VDE and CE marking
- EN45545-2 for railway applications
- slot 6 mm, web 6.5 mm

**Colours:**  
Blue: RAL 5015

**Material:**  
PC-ABS halogen-free

**Wiring duct length:**  
2 meters

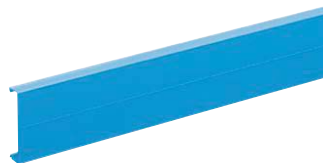
Depth (mm)	Width (mm)	Area (mm <sup>2</sup> )	1 mm <sup>2</sup> H05V- U/K	1.5 mm <sup>2</sup> H07V- U/R	2.5 mm <sup>2</sup> H07V- U/R	2.1 mm <sup>2</sup> No 14 AWG	3.3 mm <sup>2</sup> No 12 AWG	Pack Qty	Cat. ref.
			6.157 mm <sup>2</sup>	8.553 mm <sup>2</sup>	11.946 mm <sup>2</sup>	11 mm <sup>2</sup>	14 mm <sup>2</sup>		



HA760040BL

### Base and cover HA7

25 x 25	220	14	10	7	8	6	50	HA725025BL
25 x 40	375	24	18	13	14	11	48	HA725040BL
25 x 80	642	42	30	21	23	18	24	HA725080BL
40 x 25	462	30	22	15	17	13	48	HA740025BL
40 x 30	535	35	25	18	19	15	40	HA740030BL
40 x 40	749	49	35	25	27	21	50	HA740040BL
40 x 60	1,155	75	54	39	42	33	40	HA740060BL
40 x 80	1,557	101	73	52	57	44	30	HA740080BL
40 x 100	1,956	127	91	65	71	56	20	HA740100BL
60 x 25	836	54	39	28	30	24	60	HA760025BL
60 x 30	1,060	69	50	35	39	30	48	HA760030BL
60 x 40	1,404	91	66	47	51	40	40	HA760040BL
60 x 60	2,184	142	102	73	79	62	24	HA760060BL
60 x 80	2,970	193	139	99	108	85	20	HA760080BL
60 x 100	3,746	243	175	125	136	107	16	HA760100BL
60 x 120	4,519	294	211	151	164	129	12	HA760120BL
80 x 25	1,202	78	56	40	44	34	20	HA780025BL
80 x 30	1,533	100	72	51	56	44	24	HA780030BL
80 x 40	2,071	135	97	69	75	59	20	HA780040BL
80 x 60	3,243	211	152	109	118	93	20	HA780060BL
80 x 80	4,412	287	206	148	160	126	12	HA780080BL
80 x 100	5,577	362	261	187	203	159	12	HA780100BL
80 x 120	6,737	438	315	226	245	192	16	HA780120BL
100 x 30	1,875	122	88	63	68	54	48	HA7100030BL
100 x 40	2,663	173	125	89	97	76	40	HA7100040BL
100 x 60	4,239	275	198	142	154	121	16	HA7100060BL
100 x 80	5,815	378	272	195	211	166	16	HA7100080BL
100 x 100	7,391	480	346	247	269	211	12	HA7100100BL



HA70402KBL

<i>Width (mm)</i>	<i>Pack Qty</i>	<i>Cat. ref.</i>
<b>Cover HA7 for duct</b>		
25 x 25	28	HA70252KBL
25 x 40	28	HA70402KBL
25 x 80	20	HA70802KBL
40 x 25	28	HA70252BL
40 x 30	40	HA70302BL
40 x 40	28	HA70402BL
40 x 60	20	HA70602BL
40 x 80	20	HA70802BL
40 x 100	12	HA71002BL
60 x 25	28	HA70252BL
60 x 30	40	HA70302BL
60 x 40	28	HA70402BL
60 x 60	20	HA70602BL
60 x 80	20	HA70802BL
60 x 100	12	HA71002BL
60 x 120	12	HA71202BL
80 x 25	28	HA70252BL
80 x 30	40	HA70302BL
80 x 40	28	HA70402BL
80 x 60	20	HA70602BL
80 x 80	20	HA70802BL
80 x 100	12	HA71002BL
80 x 120	12	HA71202BL
100 x 30	40	HA70302BL
100 x 40	28	HA70402BL
100 x 60	20	HA70602BL
100 x 80	20	HA70802BL
100 x 100	12	HA71002BL

Wide-slot/web design for a wide range of wiring bundle sizes

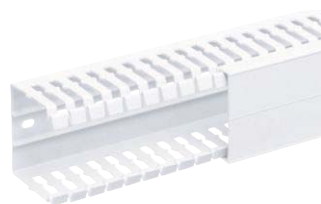
Highly recommended for use in panels subject to high internal or external temperatures. The stability of the material ensures full cover security, protecting the wiring within the temperature ranges shown.

- Temperature range from -25 °C to +90 °C
- Flame-retardant according to UL94-V0, UL-recognized and CSA-certified
- EN50085-2-3-approved, VDE and CE marking
- EN45545-2 for railway applications
- slot 6 mm, web 6.5 mm

**Colours:**  
White: RAL 9010

**Material:**  
PC-ABS halogen-free

**Wiring duct length:**  
2 meters



HA760040W

Depth (mm)	Width (mm)	Area (mm <sup>2</sup> )	1 mm <sup>2</sup> H05V- U/K 6.157 mm <sup>2</sup>	1.5 mm <sup>2</sup> H07V- U/R 8.553 mm <sup>2</sup>	2.5 mm <sup>2</sup> H07V- U/R 11.946 mm <sup>2</sup>	2.1 mm <sup>2</sup> No 14 AWG 11 mm <sup>2</sup>	3.3 mm <sup>2</sup> No 12 AWG 14 mm <sup>2</sup>	Pack Qty	Cat. ref.
------------	------------	-------------------------	--	--	---	---	---	----------	-----------

### Base and cover HA7

25 x 25	220	14	10	7	8	6	50	<b>HA725025W</b>
25 x 40	375	24	18	13	14	11	48	<b>HA725040W</b>
25 x 80	642	42	30	21	23	18	24	<b>HA725080W</b>
40 x 25	462	30	22	15	17	13	48	<b>HA740025W</b>
40 x 30	535	35	25	18	19	15	40	<b>HA740030W</b>
40 x 40	749	49	35	25	27	21	50	<b>HA740040W</b>
40 x 60	1,155	75	54	39	42	33	40	<b>HA740060W</b>
40 x 80	1,557	101	73	52	57	44	30	<b>HA740080W</b>
40 x 100	1,956	127	91	65	71	56	20	<b>HA740100W</b>
60 x 25	836	54	39	28	30	24	60	<b>HA760025W</b>
60 x 30	1,060	69	50	35	39	30	48	<b>HA760030W</b>
60 x 40	1,404	91	66	47	51	40	40	<b>HA760040W</b>
60 x 60	2,184	142	102	73	79	62	24	<b>HA760060W</b>
60 x 80	2,970	193	139	99	108	85	20	<b>HA760080W</b>
60 x 100	3,746	243	175	125	136	107	16	<b>HA760100W</b>
60 x 120	4,519	294	211	151	164	129	12	<b>HA760120W</b>
80 x 25	1,202	78	56	40	44	34	20	<b>HA780025W</b>
80 x 30	1,533	100	72	51	56	44	24	<b>HA780030W</b>
80 x 40	2,071	135	97	69	75	59	20	<b>HA780040W</b>
80 x 60	3,243	211	152	109	118	93	20	<b>HA780060W</b>
80 x 80	4,412	287	206	148	160	126	12	<b>HA780080W</b>
80 x 100	5,577	362	261	187	203	159	12	<b>HA780100W</b>
80 x 120	6,737	438	315	226	245	192	16	<b>HA780120W</b>
100 x 30	1,875	122	88	63	68	54	48	<b>HA7100030W</b>
100 x 40	2,663	173	125	89	97	76	40	<b>HA7100040W</b>
100 x 60	4,239	275	198	142	154	121	16	<b>HA7100060W</b>
100 x 80	5,815	378	272	195	211	166	16	<b>HA7100080W</b>
100 x 100	7,391	480	346	247	269	211	12	<b>HA7100100W</b>



HA70402W

<i>Width (mm)</i>	<i>Pack Qty</i>	<i>Cat. ref.</i>
<b>Cover HA7 for duct</b>		
25 x 25	28	HA70252KW
25 x 40	28	HA70402KW
25 x 80	20	HA70802KW
40 x 25	28	HA70252W
40 x 30	40	HA70302W
40 x 40	28	HA70402W
40 x 60	20	HA70602W
40 x 80	20	HA70802W
40 x 100	12	HA71002W
60 x 25	28	HA70252W
60 x 30	40	HA70302W
60 x 40	28	HA70402W
60 x 60	20	HA70602W
60 x 80	20	HA70802W
60 x 100	12	HA71002W
60 x 120	12	HA71202W
80 x 25	28	HA70252W
80 x 30	40	HA70302W
80 x 40	28	HA70402W
80 x 60	20	HA70602W
80 x 80	20	HA70802W
80 x 100	12	HA71002W
80 x 120	12	HA71202W
100 x 30	40	HA70302W
100 x 40	28	HA70402W
100 x 60	20	HA70602W
100 x 80	20	HA70802W
100 x 100	12	HA71002W