

# Marking systems for the entire cabinet

## MultiMark is the smart all-in-one solution

Let's connect.

MultiMark marking system



# Identification with MultiMark

## The concept for cost-effective marking

Industry 4.0 is leading to increasingly complex connection technology and a correspondingly high demand for systematic and fast identification inside the control cabinet.

MultiMark is a marking system that perfectly addresses today's requirements with coordinated software and printer technology, while also proving to be extremely cost-effective for small and medium sized projects

### Clear structure at first sight

The higher the level of automation, the more complex the structure of a control cabinet. Electrical connectivity has made it more important than ever for installed components to be properly labelled. If servicing needs to be carried out, the cabinet must appear orderly and comprehensible at first glance.

This is where the marking system comes to the fore. It is also an important safety feature of the cabinet infrastructure.

### Small projects, high standards

With MultiMark you have a fast and reliable marking system at your disposal for seamlessly implementing virtually any kind of marking. Terminals, wires, cables or devices – the MultiMark product family offers a well-structured, practical range of markers linked to our advanced configuration software M-Print® PRO for all areas of use.

Cost-effectiveness, in particular for small and medium print volumes, results from the integration of the THM MMP rapid thermal transfer printer – without compromising the quality. Markings are easy to read and resistant to external influences.



Identification is indispensable for all electrical equipment – for ease of installation, safe operation and efficient maintenance. With MultiMark you don't have to make compromises and can rely on a cost-effective system of software, printers and markers.



High-end or solid basics – Weidmüller offers you a choice of systems. Always tailored to your requirements.

## Systemised marking for optimised processes

Professional and standardised marking in accordance with IEC 60204-1 is a pre-requisite for fault-free operation and reliable maintenance of industrial facilities. Weidmüller offers more than the norm: “systemised marking” – a perfectly coordinated range of products for optimised processes.



**Software:** Intuitive to use and tailored to your requirements. Import, edit and manage data with ease with the M-Print® PRO software.

### Your marking needs

Your primary expectation of a marking system is that it clearly shows how your components are configured. This includes a precise print image as well as convenient handling and the guarantee of usability in an industrial environment. The software should provide you with optimum support during data entry and management, and during marker output the speed should be adaptable to your needs.



**Drucker:** Laser, ink or thermal transfer. Industrial printing systems for all requirements. Forward-looking design, in line with your requirements now and in the future.

### The marking result

You will be thrilled by Weidmüller’s marking systems. We don’t just offer you a complete, convenient process chain from data entry to ready-to-use markers for your individual cabinet configuration. Our marking solutions are already geared towards the future requirements of progressive automation. Indeed, they are one step ahead of being simply state-of-the-art!



**Markierer:** Targeted solutions for all cabinet applications – from shrink sleeves to metal markers.

# MultiMark in use

## Professional and user-friendly

### Marking: added value for every system

Standards and guidelines call for correct presentation and identification of installed components and associated documentation. The systematic use of MultiMark will put you on the right track to documenting your system in a meaningful way.

### User-friendly Usage and handling

The outstanding properties of the different marker types make it easy for you to use MultiMark as an all-purpose marking system. Durable material, strong adhesive labels, perforations – each and every detail has been carefully considered and subjected to extensive practical tests.

**Your benefits with MultiMark**

- 150 new marking products on offer
- Practically all identification requirements are taken care of
- Fast printing, fast Identification
- Handling benefits, e.g. for terminal markers
- Excellent material properties
- Convenient handling
- Clear print image



SM/CC: Eye-catching and highly adhesive equipment labels - ensure that devices are used correctly



DEK/WS: Flexible connector markers - print, clip, finished



WM: Wire markers installed without tools - simply edit your projects on a computer then print on a reel

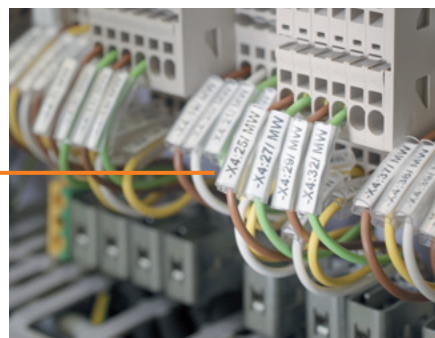




ESG: All-purpose equipment identification - simple labelling of markers for quick identification of components



SFX: Highly flexible cable markers - determine the maximum diameter from the length of the cable tie



TM-I: Plug-in wire markers - easy to install before and after the sleeve assembly

# Thermal transfer printer THM MMP

## The compact all-rounder



All-rounder THM MMP: the printer handles marking jobs that would otherwise need to be done by several different devices.

### The only printer you will need for your marking tasks

The THM MMP is a compact and modularly constructed thermal transfer printer that makes full use of its many advantages and high number of potential uses. The integrated cutting and perforation option enables continuous materials to be cut to any length – making your work considerably easier when it comes to cutting and assigning the respective labels. The printer edits markers and labels from the MultiMark family as well as continuous materials, textile and polyester labels, heat shrink sleeves and PLC labels.

Snap-on terminal markers are printed using a separate print contact pressure roller, which can be changed in just 30 seconds. Another plus: the device is very easy to operate thanks to an intuitive touch display and clear status indicators – in 22 languages. The compact design and low weight of 3.5 kg also ensures that the THM MMP really can be used anywhere, e.g. as a mobile printer for your on-site jobs.

### Your benefits with MultiMark

- A printer for all jobs
- Ideal for small and medium print volumes
- Virtually maintenance-free thanks to thermal transfer technology
- Excellent readability (resolution: 300 dpi)
- Flexibility provided by modular perforation and cutting unit
- The contact pressure roller can be changed in 30 seconds
- High output, from 250 Dekafix markers/min.

## Dekafix and WS terminal markers

### Make your labelling more efficient



The smart composite material ensures perfect usage and handling. The hard, solid plastic base enables the marker to be reliably snapped into place, while the elastic outer material is very easy to grip and makes installation easier.

#### Snaps securely into place in combination

With a marking system for terminal markers you expect the markers to be printed quickly and just as quickly snapped into place. The markers also need to have a high resistance to shocks and vibration. Our Dekafix and WS series meet these requirements in full.

MultiMark terminal markers make use of an innovative composite material of two components. The hard base contour of the marker snaps securely into the connector. The elastic surface finish makes the marker easy to mount.

This specially punched material enables the strips to be stretched to accommodate the slight variations in spacing that tend to add up, especially with long terminal blocks. Another advantage: the excellent printability of the surface material guarantees durable and wear-resistant labelling. A print resolution of 300 dpi also produces a easy to read script.

#### Your benefits with MultiMark

- Compatible with Weidmueller terminal blocks
- Firm hold and durable printing
- Continuous strips save installation time
- Easy mounting thanks to an innovative composite material
- Space for multi-line spacing

# TM-I, WM and SFX wire and cable markers

## Make your connections visible

A control cabinet can only pass the acceptance test if the various circuits can be unequivocally identified. Using our markers to uniquely identify wires and cables lets you make the most of your options and profit from a range of additional benefits.

### Process reliability: TM-I

TM-I insert tags have a guide tab which enables them to slide easily into the transparent sleeves. Once the label is in place, the tab can be snapped off at the predetermined break point. The ready-assembled sleeves are then simply pushed over the wires. Your benefits: large quantities can be efficiently pre-assembled in a single step. This saves both time and money.

### Un-detachable: WM

Our closed, un-detachable markers are mounted without the need for additional tools. The cable is simply threaded through the openings at both ends before wiring takes place. The inherent tension of the material fixes the marker in place. WM markers are available in four sizes for wire cross-sections from 0.25 mm<sup>2</sup> to 16 mm<sup>2</sup>. For each size you can choose from three label lengths and two colours. This provides you with just the right assortment for carrying out the everyday task of labelling conductors in a control cabinet.

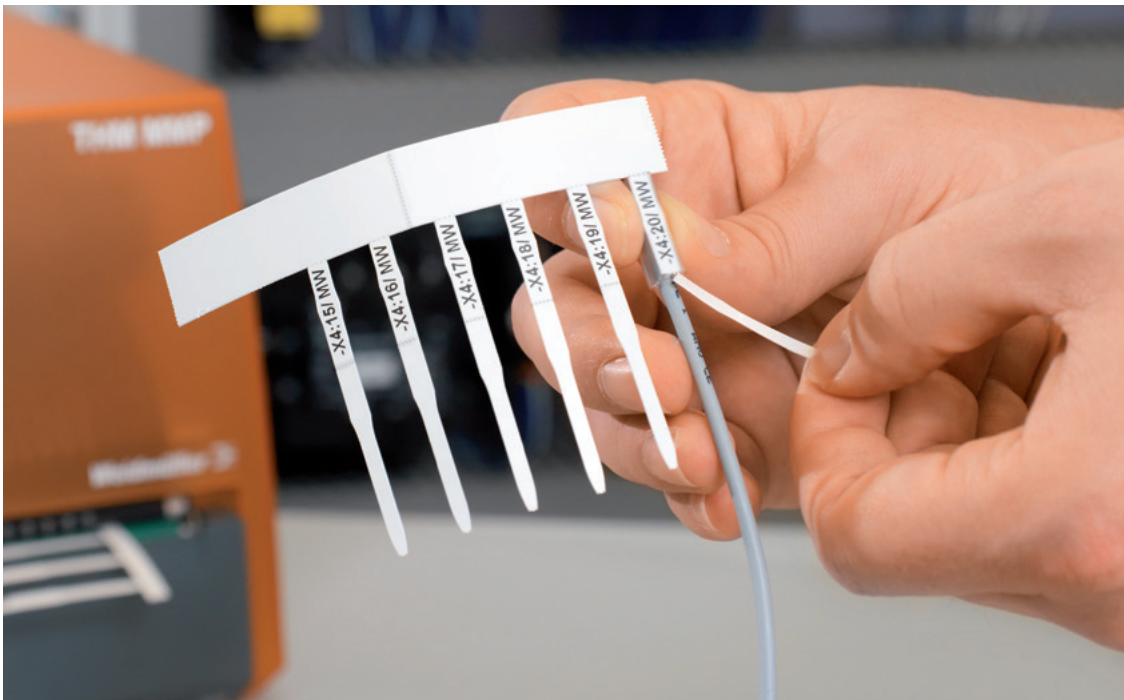
### Highly flexible: SFX

SFX markers are the preferred choice for identifying cables if you opt for a classic cable tie solution. Cables do not by nature always run in a straight line. The material used in SFX markers addresses this circumstance with highly flexible polyurethane. The marker follows every curve of the cable and latches on without resistance.

SFX markers are used for cable diameters of 7.0 mm and above. You set the upper limit yourself by the length of the cable tie. Various formats are available to enable the marker surface to be used optimally. This helps to take care of most of your labelling needs.

### Your benefits with MultiMark

- Compact, practical range of products
- Quickly printed and assembled
- Reliable identification of your connections
- Excellent material properties



Processing reliability thanks to the precisely placed break point. The TM-I is inserted into the sleeve in no time at all: push in, bend up and down and you're done.



Our SFX series of cable markers are made from extremely flexible polyurethane and adapt to the cable routing. Available for cable diameters 7.0 mm and above.

# Device markers SM, CC, ESG and EL

## Make your systems secure

Nameplates, warning signs or functional labels for control and signaling equipment – device marking ensures that machinery and equipment is used correctly and is indispensable in the control cabinet.

### Prevent incorrect operation: SM

MultiMark device markers can be used for identifying equipment from multiple manufacturers. In various areas of application they guarantee the clear assignment of all components, such as control and signaling devices from different vendors.

### Standard included: CC

Our systematically coordinated product range includes labels for identifying standard components, as well as all purpose and familiar formats: such as the CC 85/54 marker for creating nameplates.

### Longevity guaranteed: ESG

The multi-coloured and formatted labels have a strong adhesive layer to ensure the best possible adhesion to the underlying surface. Double laminated polyester makes the basic material very thin and yet extremely tear-resistant.

### Customised Identification: EL

The endless variations of MultiMark markers make them an economical alternative to conventional tag rails or special labels. For any given width, the length can be precisely configured by the software to match the respective markers perfectly. A blade is used to cut the labels individually to the specified size. Perfect for producing large labels for function blocks or complete terminal blocks.

Always in the right place: the strong adhesive polyester labels are particularly suitable for labelling equipment.



### Your benefits with MultiMark

- Double laminated polyester
- Can be used with the equipment of many manufacturers
- Device markers with a familiar design

# Ordering data

## Terminal markers DEK, WS

Material	Temperature range (min. / max.)	UL 94 flammability class	Halogen-free
PC-ABS + TPU	-40 °C / +90 °C	V2	Yes

Order No.	Type	Colour	Qty.	Order No.	Ink ribbon
2007100000	DEK 5/3,5 MM WS	White	○ 1,000	2005090000	RIBBON MM-TB 25/360 SW
2007110000	DEK 5/5 MM WS	White	○ 800	2005090000	RIBBON MM-TB 25/360 SW
2007120000	DEK 5/6 MM WS	White	○ 600	2005090000	RIBBON MM-TB 25/360 SW
2007130000	DEK 5/8 MM WS	White	○ 500	2005090000	RIBBON MM-TB 25/360 SW
2007140000	WS 8/3,5 MM WS	White	○ 1,000	2005090000	RIBBON MM-TB 25/360 SW
2007150000	WS 8/5 MM WS	White	○ 800	2005090000	RIBBON MM-TB 25/360 SW
2007160000	WS 8/6 MM WS	White	○ 600	2005090000	RIBBON MM-TB 25/360 SW
2007170000	WS 8/8 MM WS	White	○ 500	2005090000	RIBBON MM-TB 25/360 SW
2007180000	WS 12/3,5 MM WS	White	○ 1,000	2005090000	RIBBON MM-TB 25/360 SW
2007190000	WS 12/5 MM WS	White	○ 800	2005090000	RIBBON MM-TB 25/360 SW
2007200000	WS 12/6 MM WS	White	○ 600	2005090000	RIBBON MM-TB 25/360 SW
2007210000	WS 12/8 MM WS	White	○ 500	2005090000	RIBBON MM-TB 25/360 SW



## Wire markers TM-I

Material	Temperature range (min. / max.)	UL 94 flammability class	Halogen-free	Cable diameter
Polyester	-40 °C / +150 °C	HB	Yes	Depending on sleeve

Order No.	Type	Colour	Qty.	Order No.	Ink ribbon
2005890000	TM-I 12 MM BL	Blue	● 2,000	2005080000	RIBBON MM 80/360 SW
2005550000	TM-I 12 MM GE	Yellow	● 2,000	2005080000	RIBBON MM 80/360 SW
2005730000	TM-I 12 MM RT	Red	● 2,000	2005080000	RIBBON MM 80/360 SW
2005440000	TM-I 12 MM WS	White	○ 2,000	2005080000	RIBBON MM 80/360 SW
2005910000	TM-I 15 MM BL	Blue	● 2,000	2005080000	RIBBON MM 80/360 SW
2005580000	TM-I 15 MM GE	Yellow	● 2,000	2005080000	RIBBON MM 80/360 SW
2005760000	TM-I 15 MM RT	Red	● 2,000	2005080000	RIBBON MM 80/360 SW
2005450000	TM-I 15 MM WS	White	○ 2,000	2005080000	RIBBON MM 80/360 SW
2005930000	TM-I 18 MM BL	Blue	● 2,000	2005080000	RIBBON MM 80/360 SW
2005610000	TM-I 18 MM GE	Yellow	● 2,000	2005080000	RIBBON MM 80/360 SW
2005790000	TM-I 18 MM RT	Red	● 2,000	2005080000	RIBBON MM 80/360 SW
2005470000	TM-I 18 MM WS	White	○ 2,000	2005080000	RIBBON MM 80/360 SW
2005950000	TM-I 20 MM BL	Blue	● 2,000	2005080000	RIBBON MM 80/360 SW
2005640000	TM-I 20 MM GE	Yellow	● 2,000	2005080000	RIBBON MM 80/360 SW
2005820000	TM-I 20 MM RT	Red	● 2,000	2005080000	RIBBON MM 80/360 SW
2005490000	TM-I 20 MM WS	White	○ 2,000	2005080000	RIBBON MM 80/360 SW
2005970000	TM-I 23 MM BL	Blue	● 2,000	2005080000	RIBBON MM 80/360 SW
2005670000	TM-I 23 MM GE	Yellow	● 2,000	2005080000	RIBBON MM 80/360 SW
2005850000	TM-I 23 MM RT	Red	● 2,000	2005080000	RIBBON MM 80/360 SW
2005510000	TM-I 23 MM WS	White	○ 2,000	2005080000	RIBBON MM 80/360 SW
2005990000	TM-I 30 MM BL	Blue	● 2,000	2005080000	RIBBON MM 80/360 SW
2005700000	TM-I 30 MM GE	Yellow	● 2,000	2005080000	RIBBON MM 80/360 SW
2005870000	TM-I 30 MM RT	Red	● 2,000	2005080000	RIBBON MM 80/360 SW
2005530000	TM-I 30 MM WS	White	○ 2,000	2005080000	RIBBON MM 80/360 SW



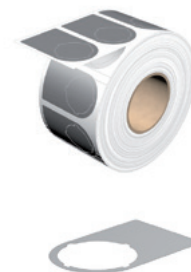


## Device markers ESG, SM

Material	Temperature range (min. / max.)	UL 94 flammability class	Halogen-free	Adhesive
Aluminised polyester	-40 °C / +120 °C	V0	Yes	Acrylic adhesive

Order No.	Type	Colour	Qty.	Order No.	Ink ribbon
2005110000	ESG 6/17 MM GE	Yellow ●	3,000	2005080000	RIBBON MM 80/360 SW
2005120000	ESG 6/17 MM GR	Grey ●	3,000	2005080000	RIBBON MM 80/360 SW
2005130000	ESG 6/17 MM SW	Black ●	3,000	2005040000	RIBBON MM 80/300 WS
2005100000	ESG 6/17 MM WS	White ○	3,000	2005080000	RIBBON MM 80/360 SW
2005150000	ESG 8/20 MM GE	Yellow ●	3,000	2005080000	RIBBON MM 80/360 SW
2005160000	ESG 8/20 MM GR	Grey ●	3,000	2005080000	RIBBON MM 80/360 SW
2005170000	ESG 8/20 MM SW	Black ●	3,000	2005040000	RIBBON MM 80/300 WS
2005140000	ESG 8/20 MM WS	White ○	3,000	2005080000	RIBBON MM 80/360 SW
2005210000	ESG 9/17 MM GE	Yellow ●	3,000	2005080000	RIBBON MM 80/360 SW
2005230000	ESG 9/17 MM GR	Grey ●	3,000	2005080000	RIBBON MM 80/360 SW
2005250000	ESG 9/17 MM SW	Black ●	3,000	2005040000	RIBBON MM 80/300 WS
2005190000	ESG 9/17 MM WS	White ○	3,000	2005080000	RIBBON MM 80/360 SW
2006240000	SM 18/9.5 MM GE	Yellow ●	1,000	2005080000	RIBBON MM 80/360 SW
2006260000	SM 18/9.5 MM GR	Grey ●	1,000	2005080000	RIBBON MM 80/360 SW
2006200000	SM 18/9.5 MM SW	Black ●	1,000	2005040000	RIBBON MM 80/300 WS
2006220000	SM 18/9.5 MM WS	White ○	1,000	2005080000	RIBBON MM 80/360 SW
2006420000	SM 27/8 MM GE	Yellow ●	1,000	2005080000	RIBBON MM 80/360 SW
2006490000	SM 27/8 MM GN	Green ●	1,000	2005080000	RIBBON MM 80/360 SW
2006480000	SM 27/8 MM GR	Grey ●	1,000	2005080000	RIBBON MM 80/360 SW
2006460000	SM 27/8 MM RT	Red ●	1,000	2005080000	RIBBON MM 80/360 SW
2006440000	SM 27/8 MM SW	Black ●	1,000	2005040000	RIBBON MM 80/300 WS
2006400000	SM 27/8 MM WS	White ○	1,000	2005080000	RIBBON MM 80/360 SW
2006510000	SM 27/12.5 MM GE	Yellow ●	1,000	2005080000	RIBBON MM 80/360 SW
2006550000	SM 27/12.5 MM GN	Green ●	1,000	2005080000	RIBBON MM 80/360 SW
2006520000	SM 27/12.5 MM GR	Grey ●	1,000	2005080000	RIBBON MM 80/360 SW
2006540000	SM 27/12.5 MM RT	Red ●	1,000	2005080000	RIBBON MM 80/360 SW
2006530000	SM 27/12.5 MM SW	Black ●	1,000	2005040000	RIBBON MM 80/300 WS
2006500000	SM 27/12.5 MM WS	White ○	1,000	2005080000	RIBBON MM 80/360 SW
2006300000	SM 27/18 MM GE	Yellow ●	1,000	2005080000	RIBBON MM 80/360 SW
2006380000	SM 27/18 MM GN	Green ●	1,000	2005080000	RIBBON MM 80/360 SW
2006340000	SM 27/18 MM GR	Grey ●	1,000	2005080000	RIBBON MM 80/360 SW
2006360000	SM 27/18 MM RT	Red ●	1,000	2005080000	RIBBON MM 80/360 SW
2006320000	SM 27/18 MM SW	Black ●	1,000	2005040000	RIBBON MM 80/300 WS
2006280000	SM 27/18 MM WS	White ○	1,000	2005080000	RIBBON MM 80/360 SW
2005810000	SM 27/18-22 MM GE	Yellow ●	1,000	2005080000	RIBBON MM 80/360 SW
2005920000	SM 27/18-22 MM GN	Green ●	1,000	2005080000	RIBBON MM 80/360 SW
2005860000	SM 27/18-22 MM GR	Grey ●	1,000	2005080000	RIBBON MM 80/360 SW
2005900000	SM 27/18-22 MM RT	Red ●	1,000	2005080000	RIBBON MM 80/360 SW
2005880000	SM 27/18-22 MM SW	Black ●	1,000	2005040000	RIBBON MM 80/300 WS
2005840000	SM 27/18-22 MM WS	White ○	1,000	2005080000	RIBBON MM 80/360 SW
2006080000	SM 36/18-30 MM GE	Yellow ●	1,000	2005080000	RIBBON MM 80/360 SW
2006180000	SM 36/18-30 MM GN	Green ●	1,000	2005080000	RIBBON MM 80/360 SW





## ELS inlay tags

Material	Temperature range (min. / max.)	UL 94 flammability class	Halogen-free	Adhesive
Polyester	-20 °C / +150 °C	HB	Yes	non-adhesive

Order No.	Type	Colour	Qty.	Order No.	Ink ribbon
2010620000	ELS 6/30 MM GE	Yellow ●	3,000	2005080000	RIBBON MM 80/360 SW
2009980000	ELS 6/30 MM WS	White ○	3,000	2005080000	RIBBON MM 80/360 SW
2005240000	ELS 8/20 MM GE	Yellow ●	3,000	2005080000	RIBBON MM 80/360 SW
2005180000	ELS 8/20 MM WS	White ○	3,000	2005080000	RIBBON MM 80/360 SW
2005260000	ELS 16/40 MM GE	Yellow ●	2,000	2005080000	RIBBON MM 80/360 SW
2005200000	ELS 16/40 MM WS	White ○	2,000	2005080000	RIBBON MM 80/360 SW



## Printers and accessories

### MultiMark

Order No.	Type	Explanation
2430920000	THM MMP	Included: power cable type E+F, UK power cord, US power cord, USB cable, 114 mm ribbon core, print cylinder for connector markers, M-Print® PRO software on DVD, RIBBON MM 110/360 SW, RIBBON MM-TB 25/360 SW



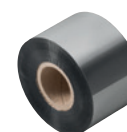
### Cutting blade

Order No.	Type	Explanation
1331600000	THM MMP CUTTER	Optional cutting knife for use with continuous labels



### Ink ribbons

Order No.	Type	Colour	Width (mm)	Length (mm)
2005080000	RIBBON MM 80/360 SW	Black ●	80	360,000
2005070000	RIBBON MM 110/360 SW	Black ●	110	360,000
2005040000	RIBBON MM 80/300 WS	White ○	80	300,000
2005090000	RIBBON MM-TB 25/360 SW	Black ●	25	360,000



## Further information

The Weidmüller online product catalogue provides lots of additional information, downloads and ordering options for the listed products.

[catalog.weidmueller.com](http://catalog.weidmueller.com)

### Disclaimer

We cannot guarantee that the publications or software we provide to customers for the purpose of placing orders are completely free of errors. We make every effort to correct such errors once we become aware of them.

All orders are subject to our General Terms and Conditions of Delivery, which can be viewed on the website of the Group company to which you submit your order. We will also be happy to send them to you on request.

## **Weidmüller – Your partner in Industrial Connectivity**

As experienced experts we support our customers and partners around the world with products, solutions and services in the industrial environment of power, signal and data. We are at home in their industries and markets and know the technological challenges of tomorrow. We are therefore continuously developing innovative, sustainable and useful solutions for their individual needs. Together we set standards in Industrial Connectivity.

Weidmüller Interface GmbH & Co. KG  
Klingenbergstraße 16  
32758 Detmold, Germany  
T +49 5231 14-0  
F +49 5231 14-292083  
info@weidmueller.com  
www.weidmueller.com

Your local Weidmüller partner can  
be found on our website:  
[www.weidmueller.com/countries](http://www.weidmueller.com/countries)

Made in Germany



Order number: 2442110000/01/2016/SMKW